

SKEINO ~ Spring Bloom Cardie ~ color options

DEEP OCEAN



SPROUT



POWDER PUFF



CORAL REEF



skeino.com ~ community@skeino.com



SPRING BLOOM CARDI



CHEVRON PATTERN KNITTING IN ONE PIECE STARTING AT THE BACK BOTTOM

using two skeins (S+M)

or three skeins (L + XL)

BAMBOO - MERINO YARN

60% Merino / 30% Bamboo

10% Nylon superwash

Gauge:

22 stitches and 29 rows
= 4 x 4 inches (10 x 10 cm) on
US # 4 (3 1/2 mm) circular needle

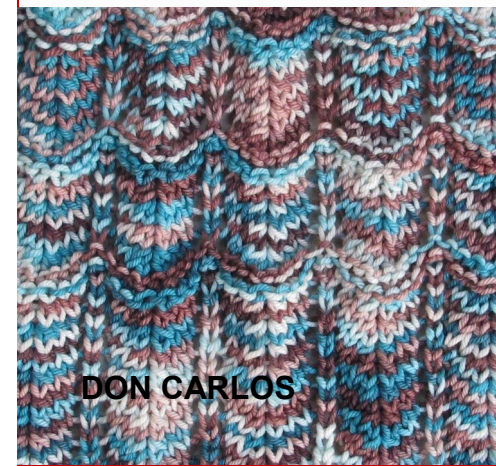
fitting SIZES

Small
(chest up to 32 inches)

Medium
(chest up to 36 inches)

Large
(chest up to 40 inches)

X-Large
(chest up to 44 inches)

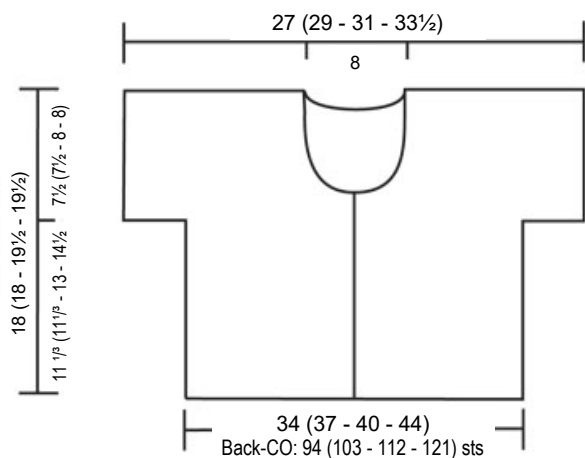
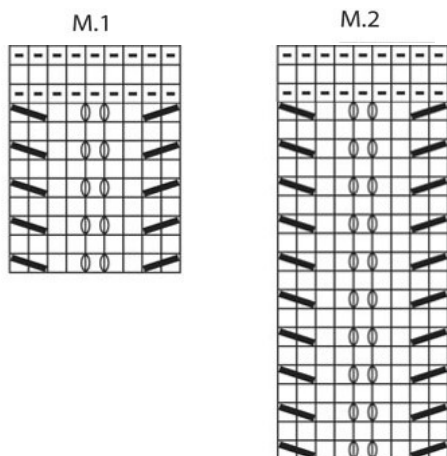


DON CARLOS

SKEINO "SPRING BLOOM CARDI"

This pattern is written for
Small (Medium, Large and X-Large) sizes.

□	= K from RS, P from WS
▣	= K from WS
□□	= 1 YO between 2 sts
▣▣	= K 2 tog
▣▣	= slip 1 st as if to K, K 1, pss0



fitting Measurements in inches: S (M - L - XL)

Chevron sequences using charts M.1 & M.2

See diagrams M.1 (12 rows) and M.2 (22 rows).

The diagrams show pattern from RS.

Each diagram = 1 repeat and has 9 sts in width.

Work back piece as follows (from bottom up):

Diagram M.1: 2 (2 - 3 - 4) times

Diagram M.2: 1 time

Diagram M.1: 3 times

cast on for the sleeves on each side a total of 21 sts

Diagram M.2: 1 time

Diagram M.1: 2 times

Diagram M.2: 1/2 times (11 rows)

See the instructions to the right and work the neck opening by following the chart.

Continue working the front:

Work front piece as follows (from top down):

Diagram M.2: 1/2 times (the remaining 11 rows)

Diagram M.1: 2 times

Diagram M.2: 1 time

bind off the sleeves on each side a total of 21 sts

Diagram M.1: 3 times

Diagram M.2: 1 time

Diagram M.1: 2 (2 - 3 - 4) times

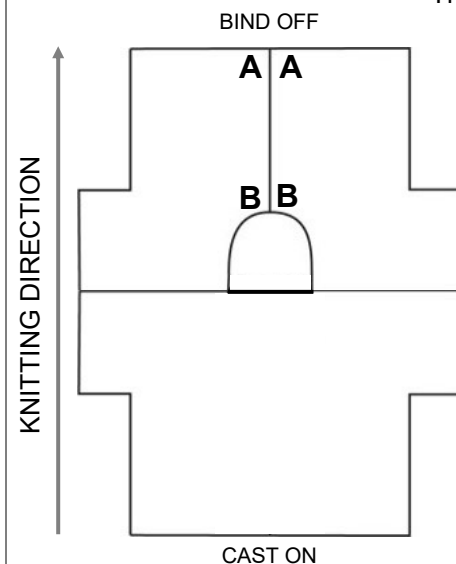
SCHEMATIC

The Cardi is knitted from the back bottom up, over the shoulders to the front bottom.

The back and the front sides have 2 K sts on each side for the seams.

The sleeves have 5 sts in Garter Stitch at the end.

The entire Cardi always uses full pattern repeats (9 sts for one repeat) across.



CAST ON: S = 94 sts [2 +(10 repeats x 9 sts) + 2]
[and set up] M = 103 sts [2 +(11 repeats x 9 sts) + 2]
L = 112 sts [2 +(12 repeats x 9 sts) + 2]
XL = 121 sts [2 +(13 repeats x 9 sts) + 2]

WORK SEQUENCE

Cast on the number of stitches you will need for your size. For all sizes: knit 7 rows (bottom edge). Start knitting the pattern (keep the first and the last 2 sts in stockinette stitch for the seams) and complete the back to the neck opening.

RS - working the pattern:

for the neck opening for all sizes:

bind off 22 sts in the center for the neck opening. This row ends at the left sleeve / front.

Move the stitches for the right sleeve to be on hold.

Continue working the left front by following the pattern instructions for the use of M.1 and M.2.

Follow the chart for the neck opening, first decreases, then increases.

Bind off 20 sts for the sleeves as stated.

Keep working in pattern stitch.

After casting on the number of stitches to reach the front opening, add 2 more stitches for the front band pickup row.

Finish your last M.1 section, except the last 3 rows and put all sts on hold onto an extra needle.

Work the right front as the left front, but reversed.

Finishing: Knitting the band all the way around

Keep the sts from your right front on your needle. The last stitch becomes stitch A in the diagram, place marker. Pick up sts at the front (1 st for 2 rows). Place a marker at the corner B.

Pick up stitches around the neck (not too loose and not too tight!). Place a marker at corner B.

Pick up sts at the front (1 st for 2 rows). Place a marker at corner A and pick up the stitches from the left front. Knit 3 rows along this band.

Work all 4 corner stitches as (A and B): K1, YO, K1 every other row (make two).

Next row: create 4 button holes on the right front.

Knit 4 or 5 more rows. Bind off.

Close side seams. Sew on buttons. Weave in ends. Happy Knitting!

OPTION

If you want your Cardi longer, just add several M.1 and M.2 sections to the length (M.1 = 1 5/8 inches and M.2 = 3 inches high).

Example: adding 8 inches to the length, work 3 x M.1 and 1 x M.2

You can purchase the needed additional yarn by ordering one size up for S/M or the Extension for L/XL. This will give you one extra skein.

