

skeino.com ~ community@skeino.com



## Three Skein Knitting Kit

using three skeins

Bamboo - Merino - Nylon blend  
Superwash

Fingering - Weight  
*easy yarn changes*

### GAUGE:

18 Stitches / 36 Rows  
(or Gauge of your choice)  
= 4 x 4 inches in Pattern Stitch  
on US # 7 Needle, circular 40"

3 skeins Bamboo yarn  
435 yards - 4 oz. each  
total of 12 oz. - 1305 yards

finished size  
width 64 inches (162 cm)  
length 34 inches (81 cm)

Color Options for Dagmar Shawl - Bamboo



PACIFIC



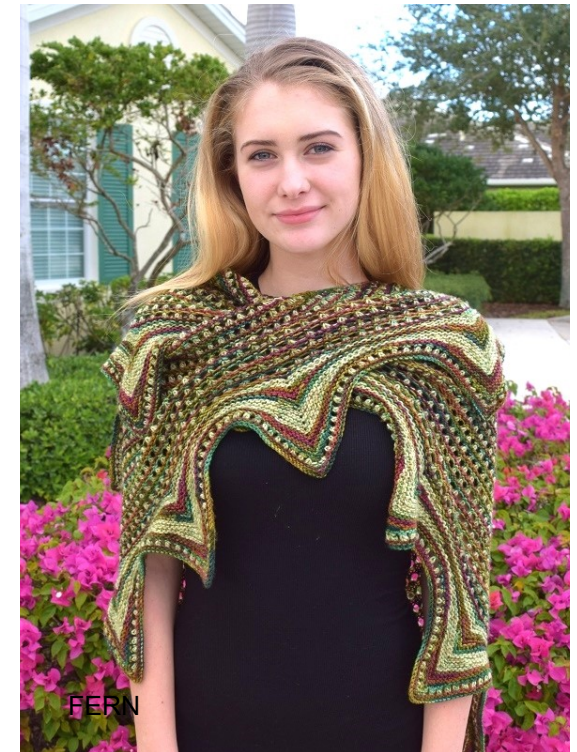
DETAIL  
PETUNIA



SAND



DAGMAR SHAWL  
BAMBOO



FERN

## DAGMAR SHAWL Bamboo

This pattern is designed by Bjorn Coordt.

**Notes:** The shawl is knitted from the top down.

**Abbreviation:** **Slkw** - slip stitch knit wise

**YO** - yarn over

**K2tog** - knit 2 together

**K-YO-K** - increase 2 sts (knit this st, YO, knit the same st again)

**KB** - knit the bar between 2 sts (increase 1 st)

**WK** - wrap yarn from the front to the back around the first stitch and knit the back leg of this stitch (for a nice tight edge)

**K2Y** - knit this stitch with both yarns, the one you just finished the last row and the one you need to knit the next row

**YOYO** - slip the YO with another YO purl wise

**W&T** - (for short rows) Slip 1 stitch knit wise, bring yarn to front, turn your work, slip the wrapped stitch unknitted

### Cast on and first 10 setup rows

Cast on 3 stitches and work row 1+2 with skein 1.

1. row: Slkw, (K-YO-K), K1
2. row: K5 - change yarn to skein 2
3. row: Slkw, (K-YO-K) 3-times, K1
4. row: K11 - change yarn to skein 3
5. row: K5, (K-YO-K), K4, Slkw
6. row: WK, K11, Slkw - change yarn to skein 1
7. row: WK, K1, KB, K4, (K-YO-K), K4, KB, K1, Slkw
8. row: WK, K15, Slkw - change yarn to skein 2
9. row: WK, K1, KB, K6, (K-YO-K), K6, KB, K1, Slkw
10. row: WK, K19, Slkw - change yarn to skein 3

### 6-row PATTERN REPEAT and YARN SEQUENCE for the body

1. row: with yarn 3: WK, K1, KB, K1, (YO, K2tog) 3-times, K1, (K-YO-K), K1, (K2tog, YO) 3-times, K1, KB, K1, Slkw
2. row: WK, K1, P2, (K1, YOYO) 3-times, P5, (YOYO, K1) 3-times, P2, K1, Slkw - change yarn to skein 1  
NOTE for the following row: the YOYO work as K1
3. row: WK, K1, KB, K10, (K-YO-K), K10, KB, K1, Slkw
4. row: WK, K27, Slkw - change yarn to skein 2
5. row: WK, K1, KB, K12, (K-YO-K), K12, KB, K1, Slkw
6. row: WK, K31, Slkw - change yarn to skein 3

Repeat rows 1 to 6 by increasing 4 stitches every other row.

The body part is ready, if you have finished row 4 from the repeat with skein 1.

You must have a total of 329 stitches on your needle for the zigzag setup row.

A total of 15 tips are being designed in the next row.

Please pay extra attention for the setup.

### Setup row for the Zigzag Border

Work the first 4 rows from the pattern repeat (using yarn 3 and 2). Change yarn to yarn 1 and start the zigzag.

#### NOTE:

!!! The tip-stitches are where the growing of the zigzags take place. They are always worked in (K-YO-K) = increase of two stitches. Each time (this applies to the short rows as well) you are working front rows you need to work the tip-stitches (K-YO-K). See the detail images on the reverse side of this page.

1. row using skein 1: WK, K1, KB, K10, [(K-YO-K), K20] 14-times, (K-YO-K), K10, KB, K1, Slkw
2. row using skein 1: WK, knit all, last = Slkw - change yarn to skein 3
3. row: WK, knit to tip, (K-YO-K), K5, W&T, K13, W&T, continue knitting to the next tip-stitch and repeat the same to the last stitch, Slkw
- 4./6./8./10./12./14. row = knit rows; first stitch = WK, last stitch = Slkw; and change yarn accordingly to the sequence
5. row: WK, knit to tip, (K-YO-K), K3, W&T, K9, W&T, K4, (K-YO-K), continue knitting to the next tip-stitch and repeat the same short row, work this repeat to the last stitch, Slkw
7. row: WK, knit to tip, (K-YO-K), K7, W&T, K17, W&T, K8, (K-YO-K), continue knitting to the next tip-stitch and repeat the same short row, work to this repeat to the last stitch, Slkw
9. row: WK, knit to tip, (K-YO-K), K15, W&T, K33, W&T, K16, (K-YO-K), K10, W&T, K23, W&T, K11, (K-YO-K), K5, W&T, K13, W&T, K6, (K-YO-K), continue knitting to the next tip-stitch and repeat the same short rows, work to the last stitch, Slkw
11. row: WK, knit to tip, (K-YO-K), K12, W&T, K27, W&T, K13, (K-YO-K), continue knitting to the next tip-stitch and repeat the same short rows, work to the last stitch, Slkw
13. row: WK, knit to tip, (K-YO-K), K7, W&T, K17, W&T, K8, (K-YO-K), continue knitting to the next tip-stitch and repeat the same short rows, work to the last stitch, Slkw
15. row: WK, K1, KB, \*K1, (YO, K2tog) 24-times, K1, tip-stitch = (K-YO-K), K1, (K2tog, YO) 24-times, K1\*, repeat \*to\* to the last 2 sts, KB, K1, Slkw
16. row: WK, knit all stitches but work the tip stitches as (K-YO-K), Slkw change yarn to skein 1
17. row: WK, knit all stitches but work the tip stitches as (K-YO-K), Slkw
18. row: WK, knit all stitches but work the tip stitches as (K-YO-K), Slkw change yarn to skein 2
19. row: WK, knit all stitches but work the tip stitches as (K-YO-K), Slkw
20. row: bind off loosely

**HAPPY KNITTING !**